



## ER-Rail Hand Rail System

The ER-Rail system is a warehouse safety barrier that is an economical and practical solution to control the movement of pedestrians. Rails are sold separately with optional surface mount or below ground posts, brackets (fixings supplied) and accessories available to allow for post and wall mounted installation. Designed to comply to AS 1657:2013 for balustrades and handrails when installed using ER-Rail mounting brackets (page 41).



ER-Rail Gates, page 62.

PART No.	DESCRIPTION
ER8030-2PA	ER-Rail 80 x 30mm x 2mtr with end caps – Powder coated aluminium
ER8030-3PA	ER-Rail 80 x 30mm x 3mtr with end caps – Powder coated aluminium
ER8030-6PA	ER-Rail 80 x 30mm x 6mtr with end caps – Powder coated aluminium
ERSJ20	ER-Rail connectors
ER8030-IS	ER-Rail infill strip 2 metres long – Natural anodised aluminium
ERG1200-PA	ER-Rail gate assembly (see page 62)
C63SME	Surface mount bollard – 63.5 x 1.6 x 1000mm (3.7kgs)
C63BGE	Below ground bollard – 63.5 x 1.6 x 1000mm (3.7kgs)
C90SME	Surface mount bollard – 90 x 3.2 x 1000mm (8.2kgs)
C90BGE	Below ground bollard – 90 x 3.2 x 1000mm (8.8kgs)



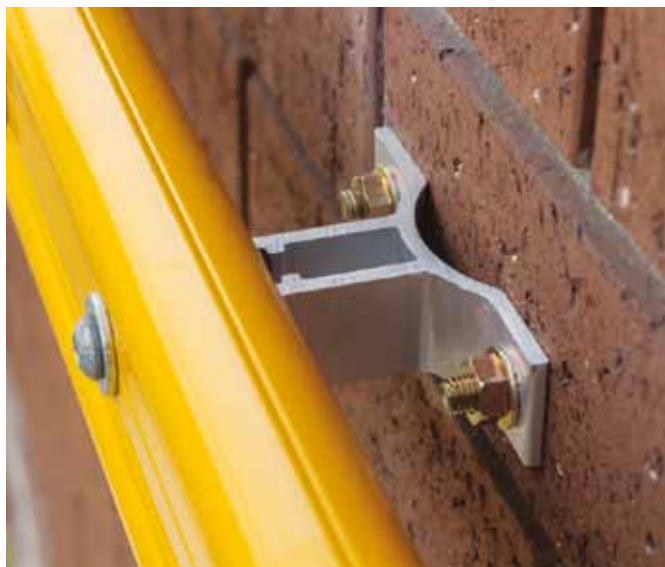
Think a heavy duty rail would suit you better? Page 42.



PART No.	DESCRIPTION
<b>ERK-A</b>	ER-Rail knuckle assembly – Cast aluminium



PART No.	DESCRIPTION
<b>RPB63-A</b>	ER-Rail bracket for 63.5mm post
<b>RPB90-A</b>	ER-Rail bracket for 90mm post



PART No.	DESCRIPTION
<b>RWB63-A</b>	ER-Rail to wall mounting bracket



PART No.	DESCRIPTION
<b>TB100-A</b>	100mm Toe-board – 6 metres (13kgs)
<b>TB150-A</b>	Heavy 150mm Toe-board – 6 metres (27kgs)
<b>TBJ200</b>	Toe-board joiner
<b>TBC63-A</b>	Toe-board clamp for 63mm post
<b>TBC90-A</b>	Toe-board clamp for 90mm post

## ER-Rail Gate

An economical spring-return pedestrian gate that can be post, wall or rail mounted. It is designed to be used with our modular aluminium ER-Rail system (see page 40).

PART No.	DESCRIPTION
ERG1200-PA	ER-Rail gate (5.3kgs)
KIT23	Gate to post fixing kit – Up to 63mm diameter posts
KIT24	Gate to post fixing kit – Up to 90mm diameter posts

<b>Description:</b>	Manual pedestrian swing gate
<b>Operation:</b>	Push open/adjustable spring closure
<b>Construction:</b>	Steel chassis with aluminium rail
<b>Gate Swing:</b>	90 degrees
<b>Gate Stop:</b>	Built-in
<b>Receiver Post:</b>	Optional
<b>Maximum Opening:</b>	1200mm wide
<b>Minimum Opening:</b>	800mm wide
<b>Mounting Type:</b>	Post, wall or in-line
<b>Rail Type:</b>	Aluminium 80 x 30mm
<b>Rail Height:</b>	1000mm above floor
<b>Finish:</b>	Powder coated with reflective tape

03



Adjustable spring tension



## PR-Rail Hand Rail System

PR-Rail is an aluminium railing system designed for use in car parks, factories and shopping centres or anywhere that requires vehicle and pedestrian separation. Rails are sold separately with optional surface mount or below ground posts and brackets. A range of accessories are also available. Industrial gates and rails comply with AS 1657:2013 when installed using mounting brackets (page 43).

PART No.	DESCRIPTION
PR14540-2PA	PR-Rail 145 x 40mm x 2mtr with end caps – Powder coated aluminium
PR14540-3PA	PR-Rail 145 x 40mm x 3mtr with end caps – Powder coated aluminium
PR14540-4PA	PR-Rail 145 x 40mm x 4mtr with end caps – Powder coated aluminium
PR14540-5PA	PR-Rail 145 x 40mm x 5mtr with end caps – Powder coated aluminium
PR14540-6PA	PR-Rail 145 x 40mm x 6mtr with end caps – Powder coated aluminium
PRSJ32	PR-Rail connectors
PRG1500-PA	PR-Rail gate assembly (see page 63)
C63SME	Surface mount bollard – 63.5 x 1.6 x 1000mm
C63BGE	Below ground bollard – 63.5 x 1.6 x 1000mm
C90SM	Surface mount bollard – 90 x 5 x 1000mm
C90BG	Below ground bollard – 90 x 5 x 1000mm



**PR-Rail Gates, page 63.**



**Looking for a more economical version? Page 40.**





PART No.	DESCRIPTION
PRK-A	PR-Rail knuckle assembly – Cast aluminium



PART No.	DESCRIPTION
RPB63-A	PR-Rail bracket for 63.5mm post
RPB90-A	PR-Rail bracket for 90mm post



PART No.	DESCRIPTION
RWB90-A	PR-Rail to wall mounting bracket



PART No.	DESCRIPTION
TB100-A	100mm Toe-board – 6 metres (13kgs)
TB150-A	Heavy 150mm Toe-board – 6 metres (27kgs)
TBJ200	Toe-board joiner
TBC63-A	Toe-board clamp for 63mm post
TBC90-A	Toe-board clamp for 90mm post

## PR-Rail Gate

A spring-return pedestrian gate similar in action to the ER-Rail gate in that it can be post, wall or rail mounted. It is designed to be used with our modular aluminium PR-Rail system (see page 42).

PART No.	DESCRIPTION
PRG1500-PA	PR-Rail gate (7kgs)
KIT23	Gate to post fixing kit – Up to 63mm diameter posts
KIT24	Gate to post fixing kit – Up to 90mm diameter posts

<b>Description:</b>	Manual pedestrian swing gate
<b>Operation:</b>	Push open/adjustable spring closure
<b>Construction:</b>	Steel chassis with aluminium rail
<b>Gate Swing:</b>	90 degrees
<b>Gate Stop:</b>	Built-in
<b>Receiver Post:</b>	Optional
<b>Maximum Opening:</b>	1500mm wide
<b>Minimum Opening:</b>	800mm wide
<b>Mounting Type:</b>	Post, wall or in-line
<b>Rail Type:</b>	Aluminium 145 x 40mm
<b>Rail Height:</b>	1000mm above floor
<b>Finish:</b>	Powder coated with reflective tape

03



Adjustable spring tension