



Skateboard Stops

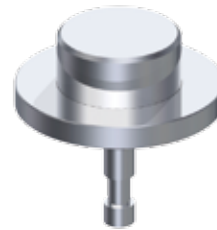
Stop skateboarders in their tracks with our skateboard studs. They are designed to prevent the damage caused to street furniture and save you from costly repair bills. They are made to the highest possible quality, machined from solid marine grade 316 stainless steel. Available in seven styles and two sizes for different applications, they are economical to buy and simple to install using basic tools that are readily available to most maintenance and installation contractors.



SK20F-SS
Skateboard stud 20mm diameter
– Flat top



SK30F-SS
Skateboard stud 30mm diameter
– Flat top



SK30FC-SS
Skateboard stud 30mm diameter
– Flat top with 50mm dia. collar



SK20D-SS
Skateboard stud 20mm diameter
– Dome top



SK30D-SS
Skateboard stud 30mm diameter
– Dome top



SK30DC-SS
Skateboard stud 30mm diameter
– Dome top with 50mm dia. collar



SK23R-SS
Skateboard stud 23mm diameter
– Round ball