



KNUCKLE ASSEMBLY

Robust cast aluminium construction with a Grey powder coated finish. Allows PR-Rails to be connected continuously reducing the number of mounting posts required. Knuckles can pivot through 180 degrees and can be locked at any angle. Each knuckle assembly come complete with all necessary mounting hardware.

PART No.	DESCRIPTION
PRK-A	PR-Rail knuckle assembly – Powder coated aluminium



RAIL END CAP

U.V. stabilised injection moulded Black polyethylene end caps gives a neat finished look to all rail ends.

PART No.	DESCRIPTION
CAP14540P	PR-Rail plastic end cap – Black



RAIL TO POST BRACKETS

Extruded aluminium bracket kits for mounting ER/PR-Rails to either 63.5 or 90mm diameter posts. Each kit is supplied complete with all mounting hardware and requires no drilling of the posts. Rails can be attached loosely by hand, then levelled and tightened at any stage. Rails are fixed to the brackets by a single bolt through the rail (supplied with kit).

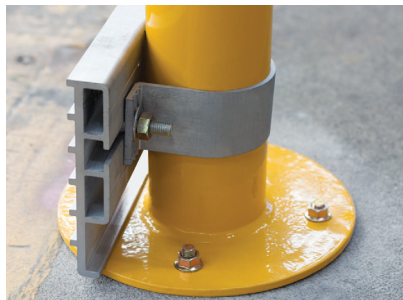
PART No.	DESCRIPTION
RPB63-A	PR-Rail bracket for 63.5mm post
RPB90-A	PR-Rail bracket for 90mm post



RAIL TO WALL BRACKET

Extruded aluminium bracket kit for mounting ER/PR-Rails to walls or square posts. Each kit is supplied with the rail fixing but not the wall/post fixings due to the uncertainty of the surface material. Rails are fixed to the brackets by a single bolt through the rail which is supplied with the bracket.

PART No.	DESCRIPTION
RWB90-A	PR-Rail to wall mounting bracket



TOE-BOARDS

Toe-boards fit onto railing systems to prevent forklift tyres and other objects from intruding into pedestrian walkways. They also stop objects falling from raised platforms onto lower levels. They require no drilling and can be retrofitted to 63 or 90mm posts.

PART No.	DESCRIPTION
TB100-A	100mm Toe-board – 6 metres
TB150-A	Heavy 150mm Toe-board – 6 metres
TBJ200	Toe-board joiner
TBC63-A	Toe-board clamp for 63mm post
TBC90-A	Toe-board clamp for 90mm post



MEZZANINE FORKLIFT GATE

Mezzanine loading gates allow materials to be loaded by fork lift to elevated platforms or mezzanine areas safely while preventing falls by excluding staff from exposed unprotected edges. Creates a safe loading cell up to 1500 x 2000mm. Counter-balanced aluminium arms and toe-board that can be cut down as required.

Detailed information page 35.

PART No.	DESCRIPTION
MZ1500-A	1.5 metre mezzanine gate assembly